



techniwell

JET-GROUTING, GROUTING AND DRILLING EQUIPMENT



TW 700

POMPA TRIPLEX ALTA PRESSIONE HIGH PRESSURE TRIPLEX PUMP

A LAYNE CHRISTENSEN COMPANY



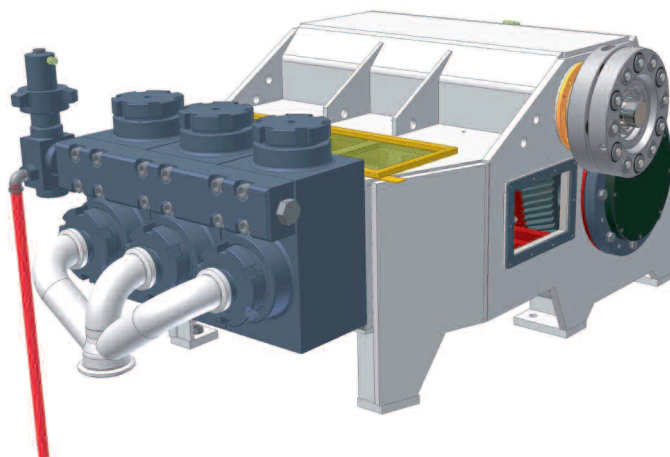
Dimensioni corpo pompa TW 700

Bare shaft TW 700 pump dimensions

Larghezza / Width 1.600 mm

Lunghezza / Length 2.080 mm

Altezza / Height 1.030 mm



Principali caratteristiche modello TW 700 / Main features of model TW 700

Pressione massima / Maximum pressure 900bar // 90 MPa (13.050 psi)

Portata massima / Maximum flow rate 875 lit/min (267 gpm)

Potenza massima / Diesel engine power 700 HP

Diametro pistoni / Piston diameter 88,9 mm (3 1/2 ") - 101,6 mm (4") - 114,3 mm (4 1/2 ") - 127,0 mm (5")

Corsa pistoni / Piston stroke 177.8 mm (7")

Colpi massimi / Maximum stroke rate 130 /min (130 spm)

Diametro aspirazione / Suction diameter 127.0 mm (5")

Diametro mandata / High pressure output diameter 50 mm (2")

Trasmissione con sistema a doppio pignone e corona di tipo elicoidale
Transmission system with double pinion and crown helical gears

Pannello di comando con monitor "touch screen"
Control panel with "touch screen" monitor

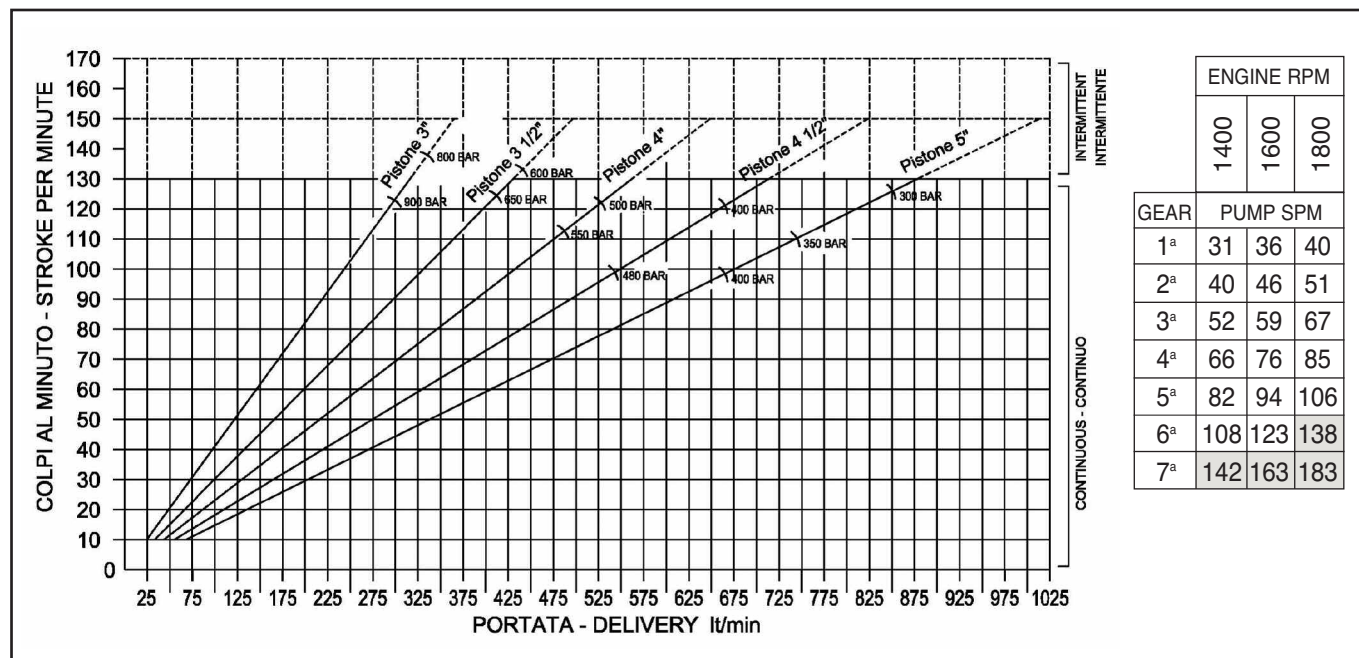
Dimensioni e peso / Overall dimensions and weight

Larghezza / Width
2.438 mm

Lunghezza / Length
6.355 mm

Altezza / Height
2.591 mm

Peso / Weight
15.000 Kg



tecniwell
JET-GROUTING, GROUTING AND DRILLING EQUIPMENT

Tecniwell S.r.l. - Via I° Maggio, 61 - 29027 Podenzano (PC) Italy
T +39 0523 524086 - F +39 0523 524088
E mail:info@tecniwell.com - http://www.tecniwell.com